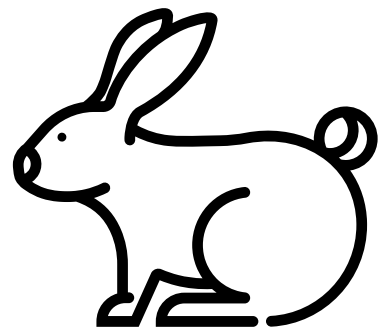
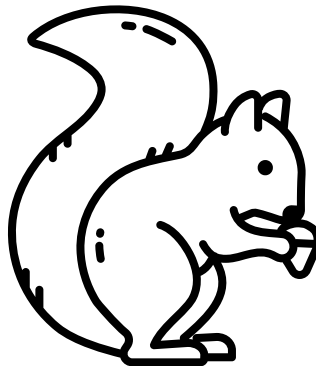
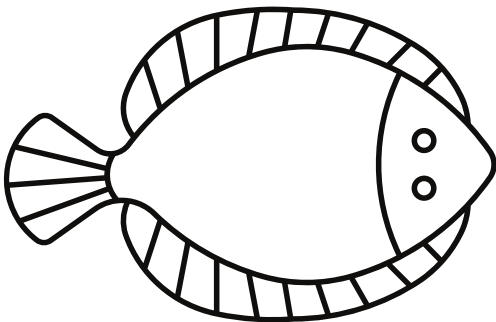
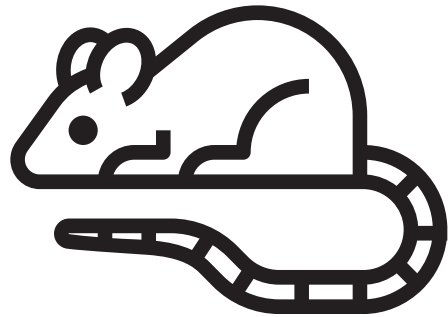
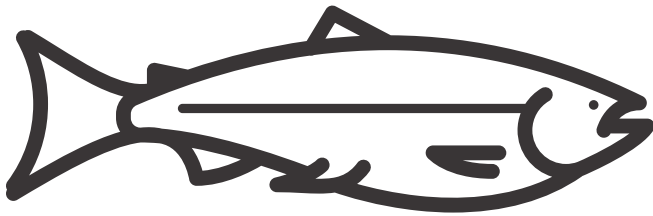
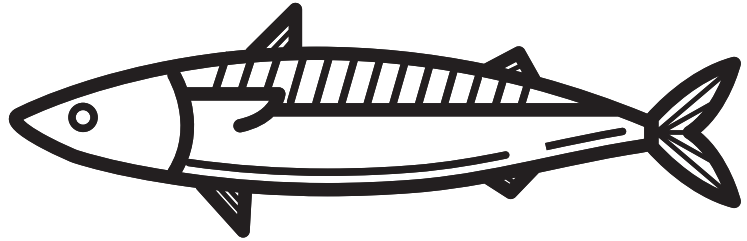
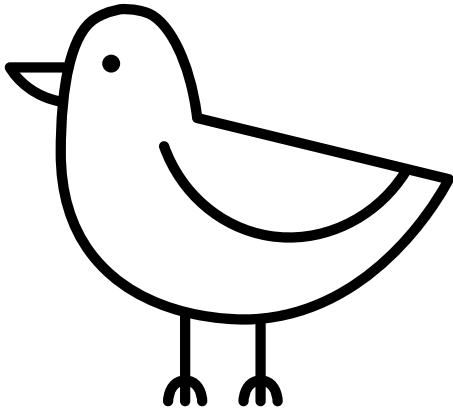




Audubon

Hog Island
Audubon Camp



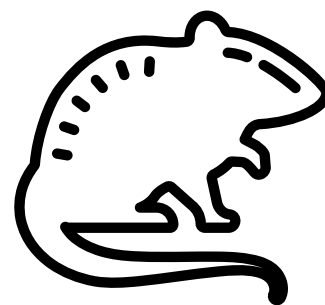
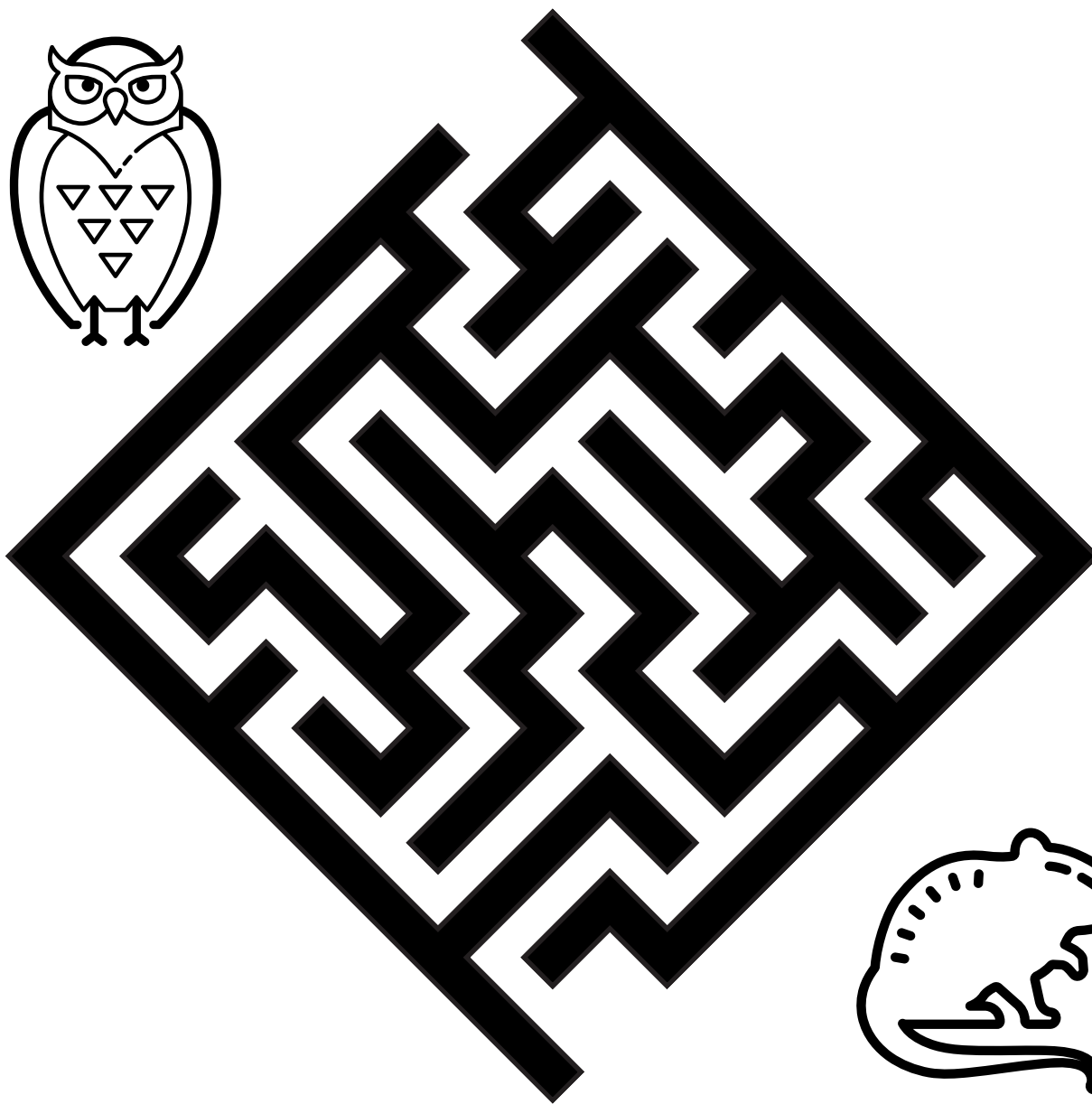
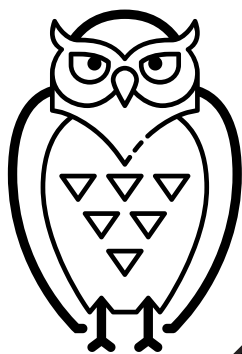
Prey Match

Ospreys and Owls are both predatory birds but they eat different food sources. Color all the Osprey prey in shades of blue and all the Owl prey in shades of brown and red.



Audubon

Hog Island
Audubon Camp



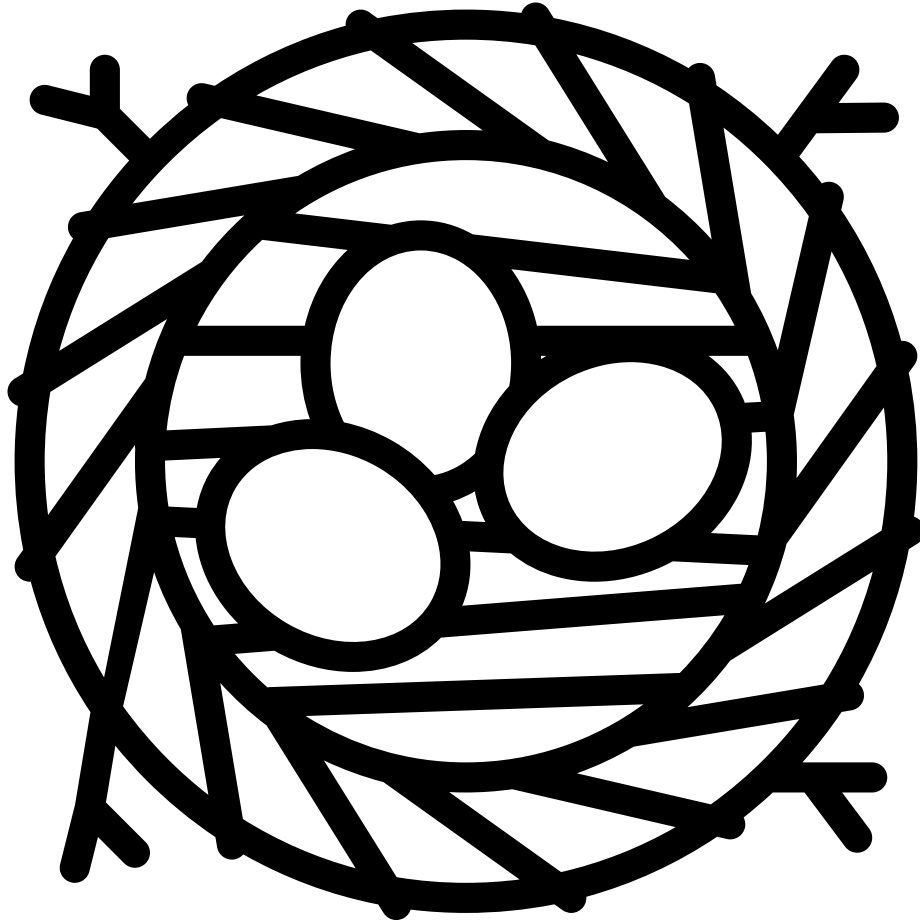
Owl Maze

Owls are mostly nocturnal and they must use their keen sense of hearing to locate their prey. Help the Owl find it's prey in the maze.



Audubon

Hog Island
Audubon Camp



Owl and Osprey Nests

Owls and Ospreys both lay 1-3 eggs in a large nest. Often they use the same nest year-after-year. They even decorate their nest with special sticks, moss and trash. Decorate your nest with your favorite colors and items.